

**Rising 6th  
Curriculum Night  
Special Education**

**Glasgow MS**





## **Agenda:**

- **Introduction**
- **Transition Process**
- **Traditional Services**
- **2e**

## Special Ed Office Team

**Katherine (KT) Jutcovich - Department Chair**

**Coretta Brown - Administrator**

**Susan Williams - Local Screening Chair**

**Ron Edwards - Principal's Designee**

**Katherine Gonzalez - Office Assistant**



# Elementary to Middle

## BIG change is coming

- 1-3 teachers → 8+
- 1-2 classes → 7+
- Moving between classes every 90 minutes
- Block schedule
- More personalities to navigate
- About 600 students in each grade

## Supporting your student

**Check in and see how their day was.**

**Remind them about their different classes each day.**

**Partnership and communication between home and school team to support student success.**

**SIS ParentVUE**

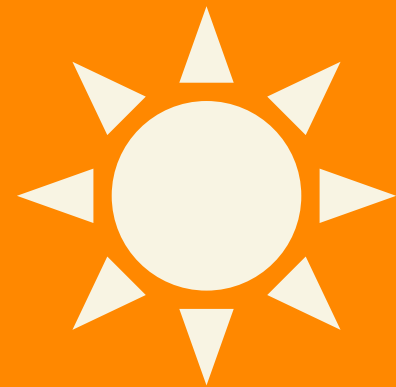
**Collaboration between the elementary schools and Glasgow team is already beginning.**

**A “transition meeting” will take place with you, the parent, the elementary team, and a Glasgow representative. At this meeting we will:**

- Discuss current elementary services**
- Talk about what similar services would look like in the middle school setting**
- Determine what supports (i.e., accommodations, classes, etc) your child would need to have a successful transition.**
- Propose special education services for 6th grade.**



## **Transition Process**



# **Traditional Services & Programming**



- **General education curriculum**
- **Adapted curriculum**
- **Electives**
- **Related services**



# General Curriculum

## Team Taught

- Special education services in the *general education* setting available for all core content areas (English, social studies, math, science)

## Small Group / Self Contained

- Special education services in the *special education* setting available for all core content areas (English, social studies, math, science)

**2E - we'll talk more on this shortly...**



# **Adapted Curriculum**

**Students access the adapted curriculum (VESOL / VAAP), receive instruction using the Virginia Essentialized Standards of Learning in a small group and highly individualized setting.**

**Students have ability to access an elective in the general education setting with special education support.**

**Students accessing adapted curriculum typically also access small group PE/Adapted PE services as well as WAT (work and transition) services.**

**Related services, such as OT, PT, and ATS will push into these classrooms to support students.**





# Electives

## Currently we have the following special education electives:

- **Literacy** : small group decoding and fluency instruction for students who are decoding below grade level. This class uses the Orton Gillingham methodology of instruction based in the science of reading.
- **Personal Development** : Personal Development is designed to provide instruction to enhance personal development and interpersonal skills for students with disabilities. In addition, this course will provide social and/or emotional support in order to progress in the general education curriculum. The areas of instruction for this course include peer relations, self-management, academic skills, compliance skills, and assertion skills.
- **Strategies for Success**: Strategies for Success is designed to provide support to a student in core curricular areas and to provide direct instruction in specific learning strategies, study skills, time management, organization, and self-advocacy skills.
- **WAT (Work Awareness & Transition)** : This year-long course is designed to assist students as they begin to consider high school and post secondary options through career awareness and career exploration activities. Students learn and practice appropriate interpersonal/co-worker interactions, explore interests related to career options, and develop work related skills through a variety of work experiences in the school environment.



# Related Services

Currently we have the following special education electives:

- **Adapted PE Class** : The adapted health and physical education course is a modified version of the general health and physical education course and is designed for students who have IEPs indicating adapted physical education services in a special education setting. Students strengthen and/or master basic skills developed at the elementary level. Emphasis is on organized lead-up activities, modified games, and fitness and wellness activities. Content areas include, rhythmic activities and dance, physical fitness, wellness-related testing, and application of skills in selected games and sports. Activities are individualized based on the students' present level of performance and identified areas of need and designed to maximize participation. Students will participate in modified health education units required of their grade level.
- **Adapted PE services** : The adapted PE teacher pushes into the general education setting based on the hours within the IEP to support specific IEP goals and participation.
- **All other related services:** most related service providers work with multiple schools, and will come to support your student and provide services based on what is in their IEP. Presently we do have the following related services available full time in the building:
  - Speech and language services
  - Counseling



# 2e



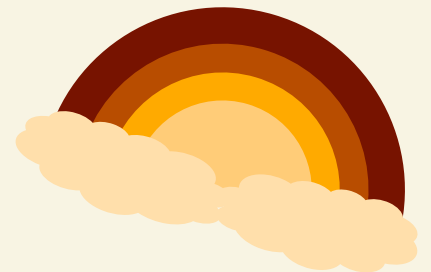
**We want to work with you and the elementary team to propose appropriate services for your child at the middle school level. These could include...**

- **Consult model**
- **General ed settings (honors, AA, etc).**
- **Small group**
- **Creative programming**

# Contact Information

**K.T. Jutcovich**

**[ktjutcovich@fcps.edu](mailto:ktjutcovich@fcps.edu)**



**Thank You**

